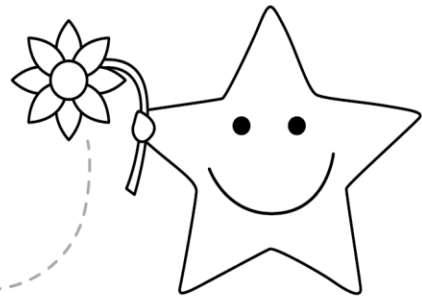
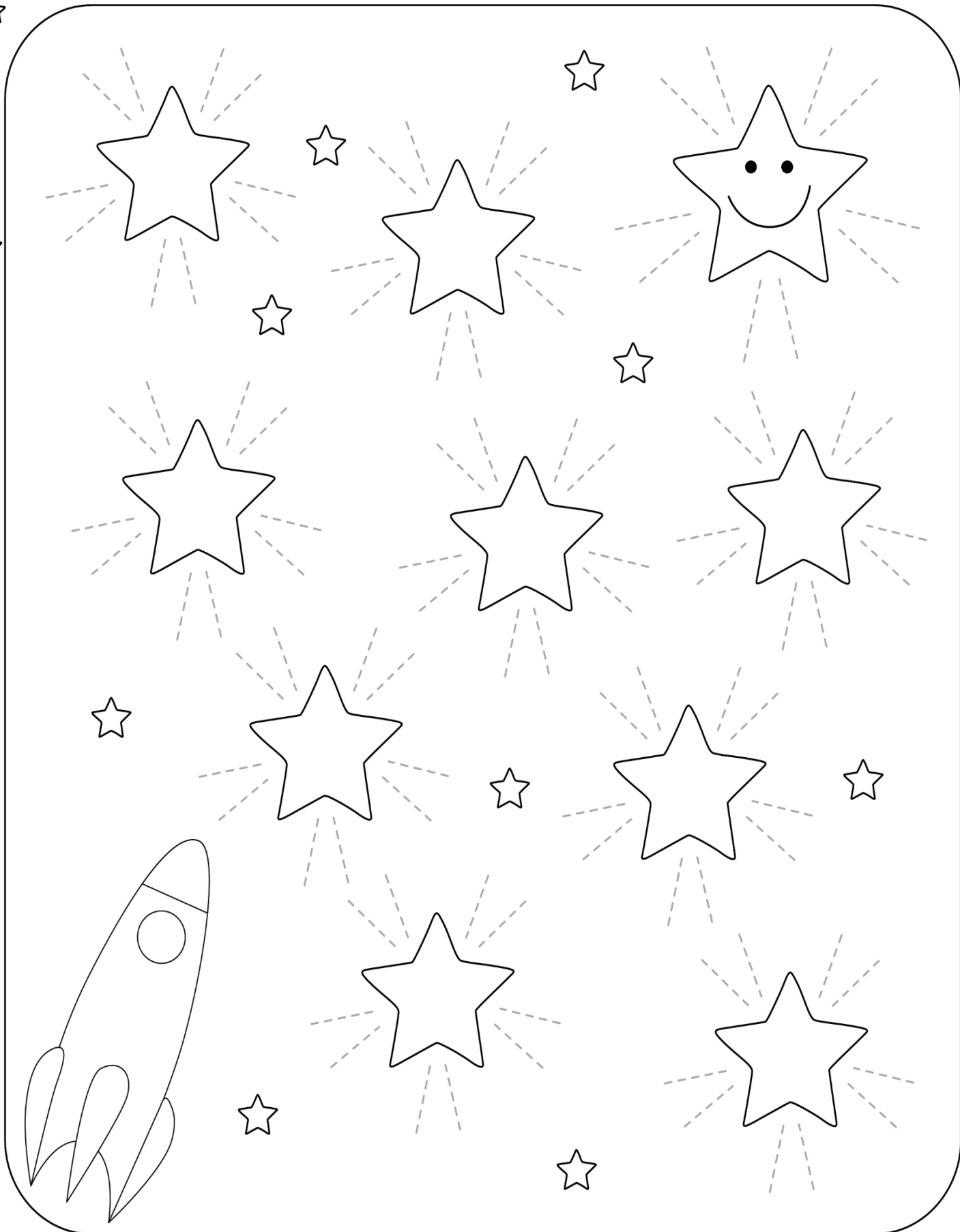
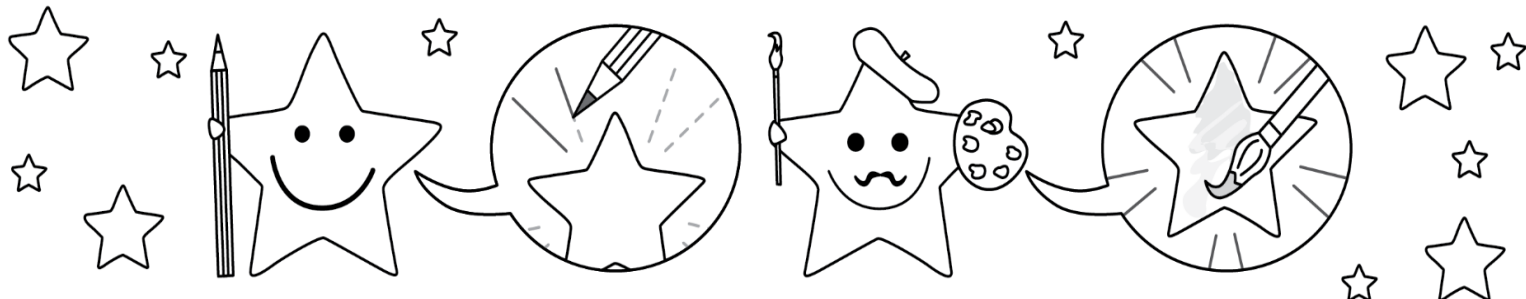
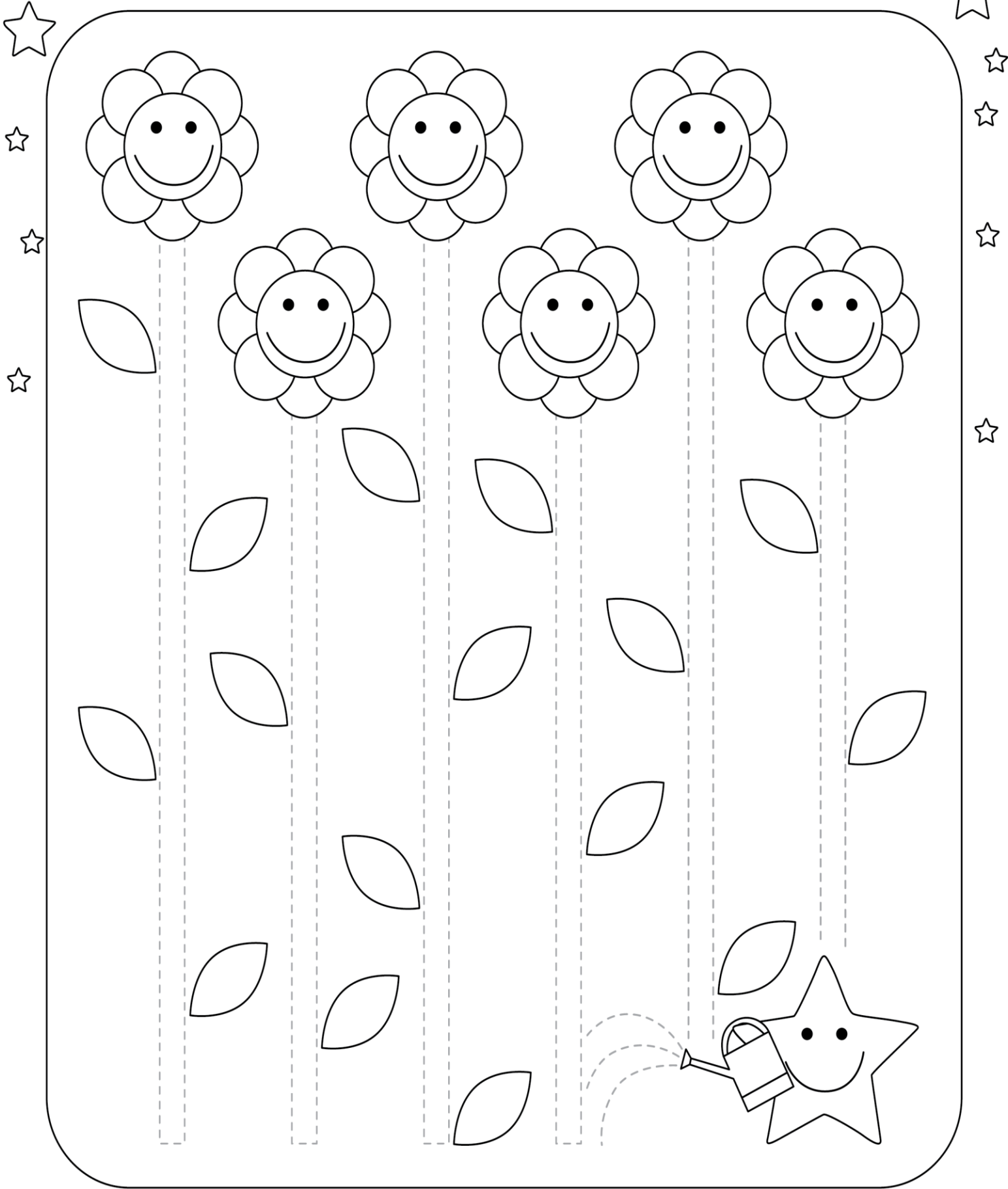
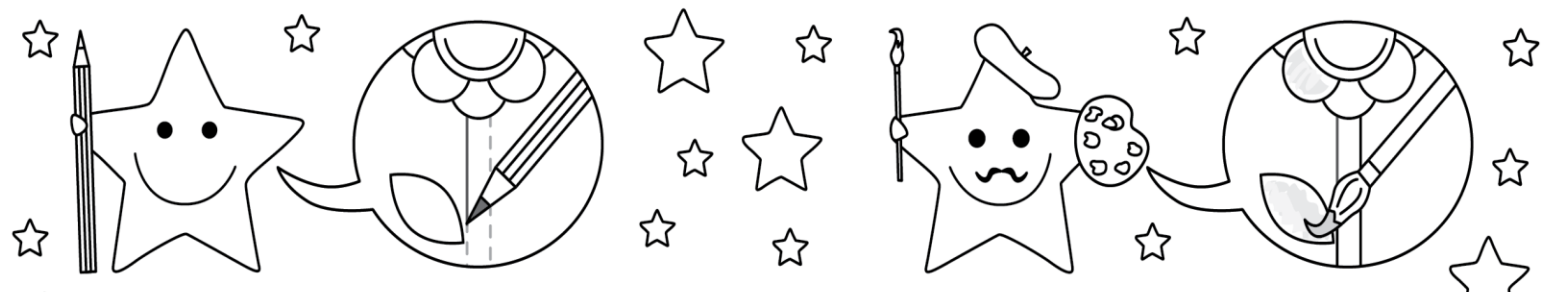


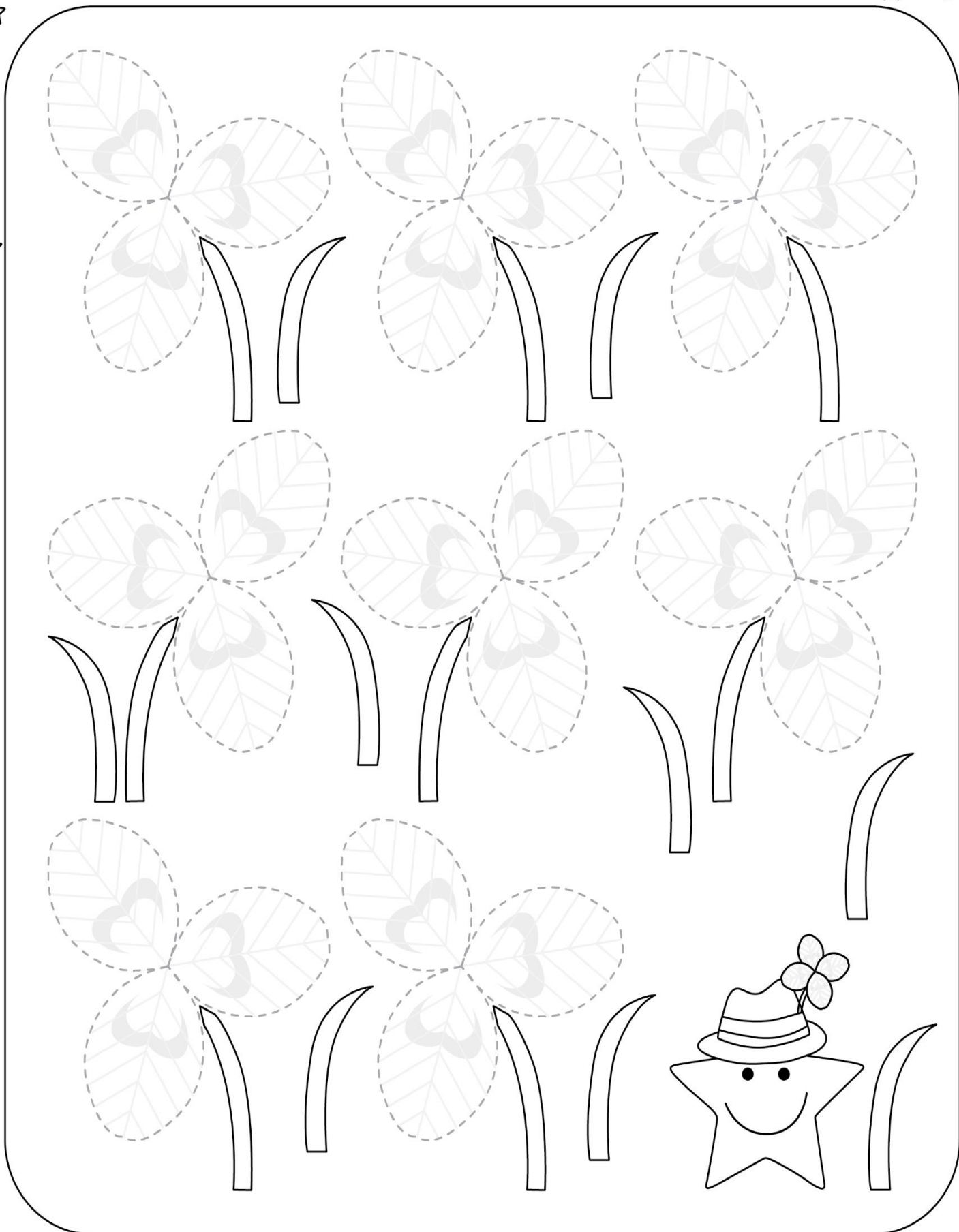
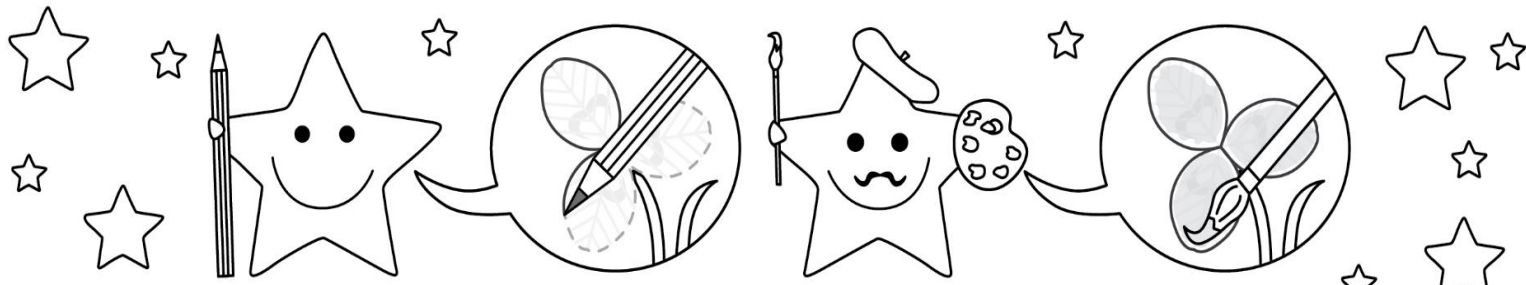
Handwriting practice section with six rows of dashed lines. Each row starts with a striped fish on the left and ends with a flower on the right. The dashed lines form a continuous, wavy path between the fish and the flower, consisting of a series of overlapping loops. The entire practice area is enclosed in a rounded rectangular border with small stars on the left and right sides.

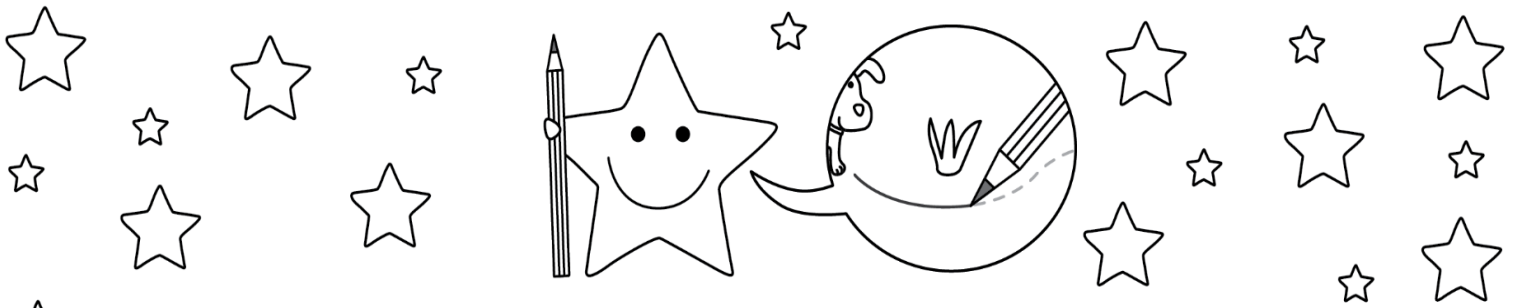




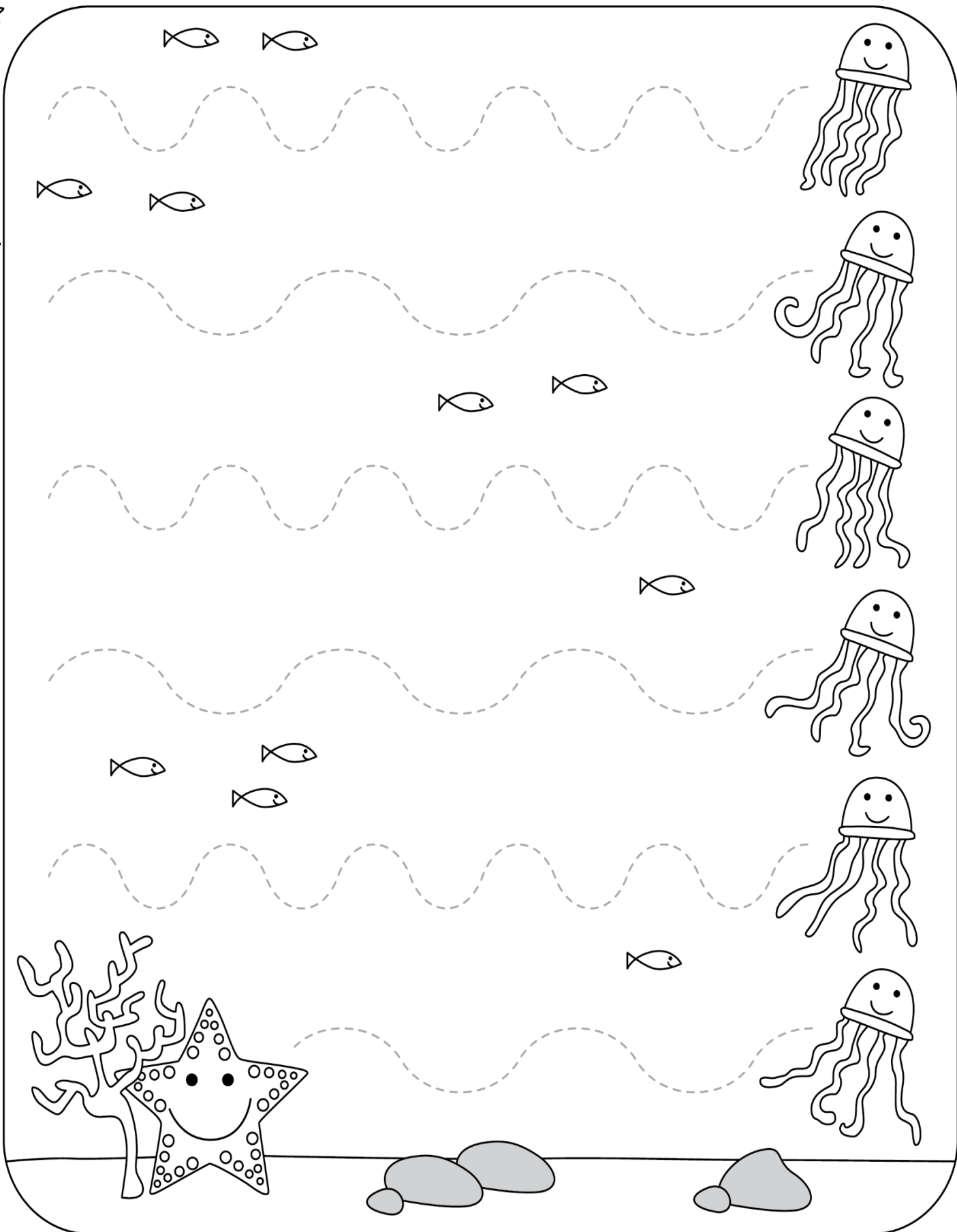
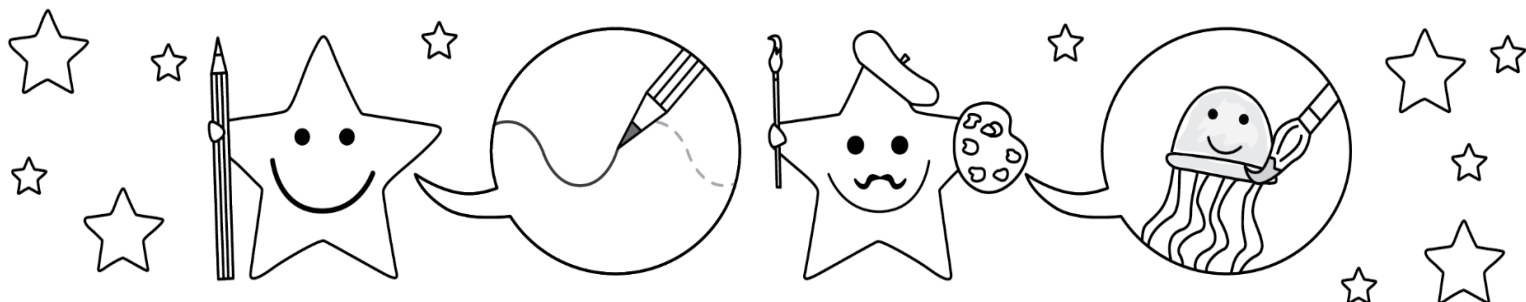


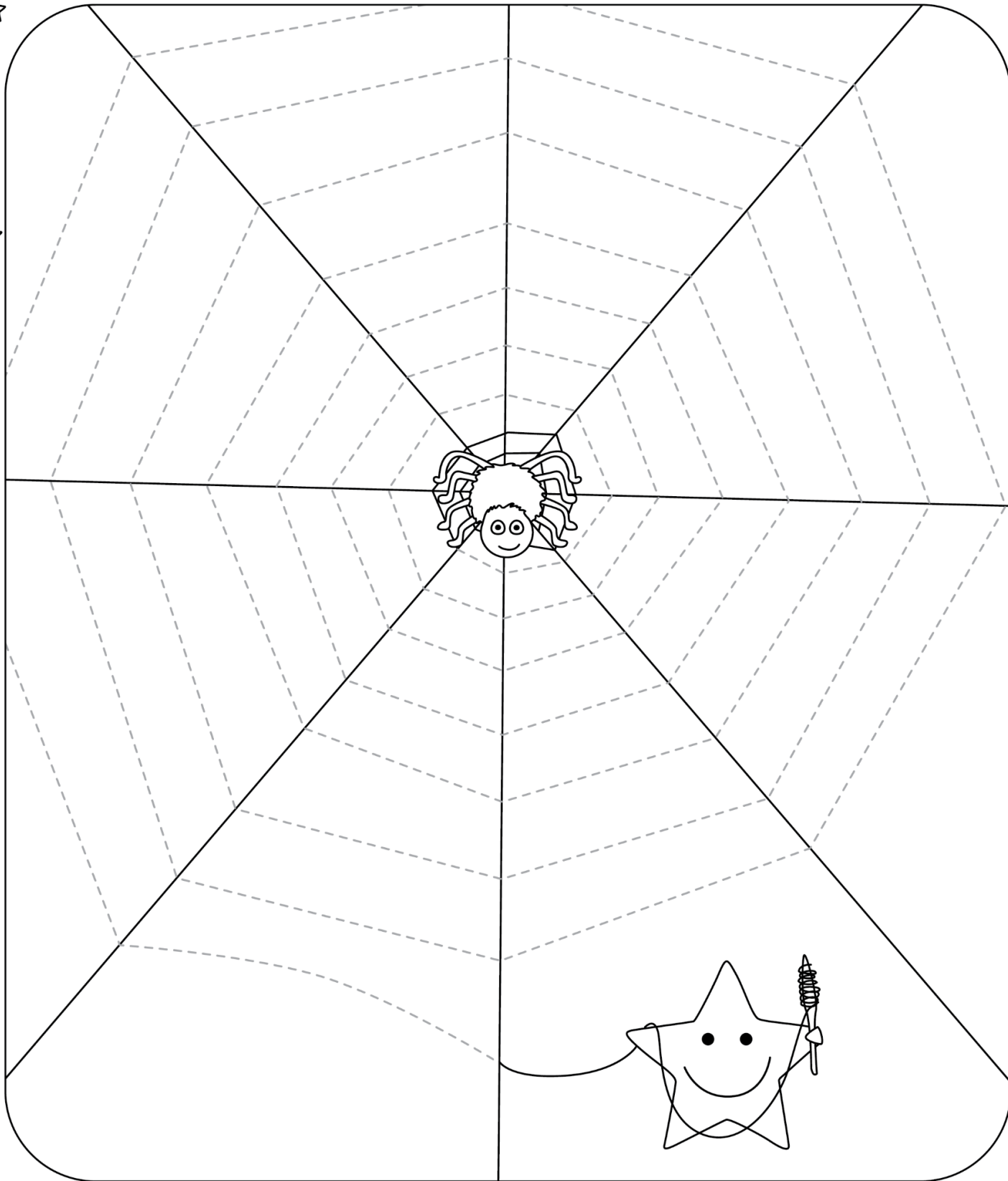
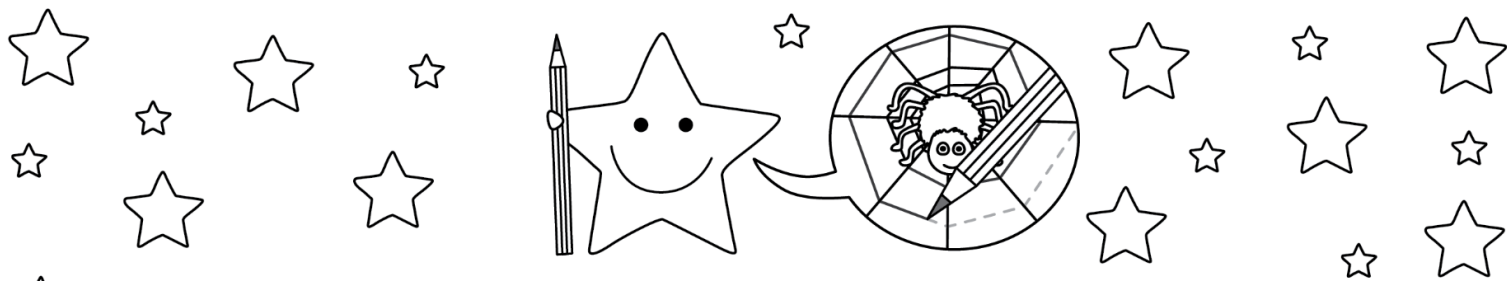


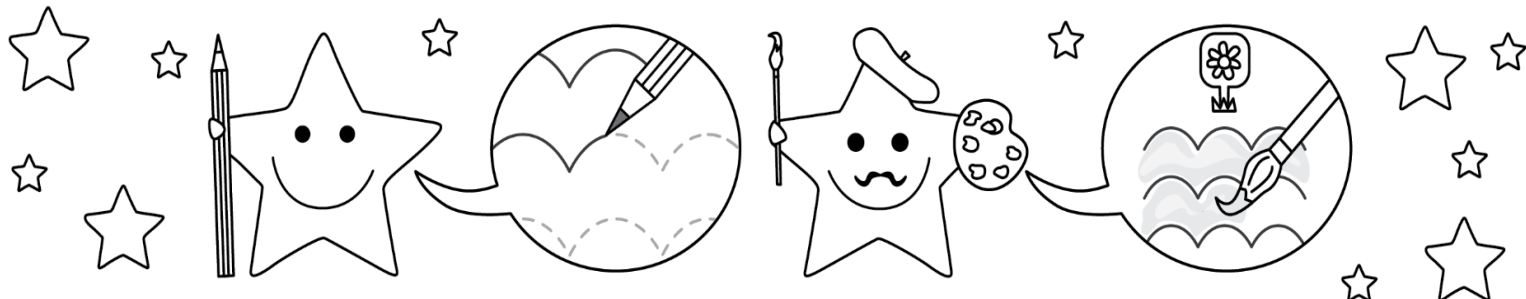




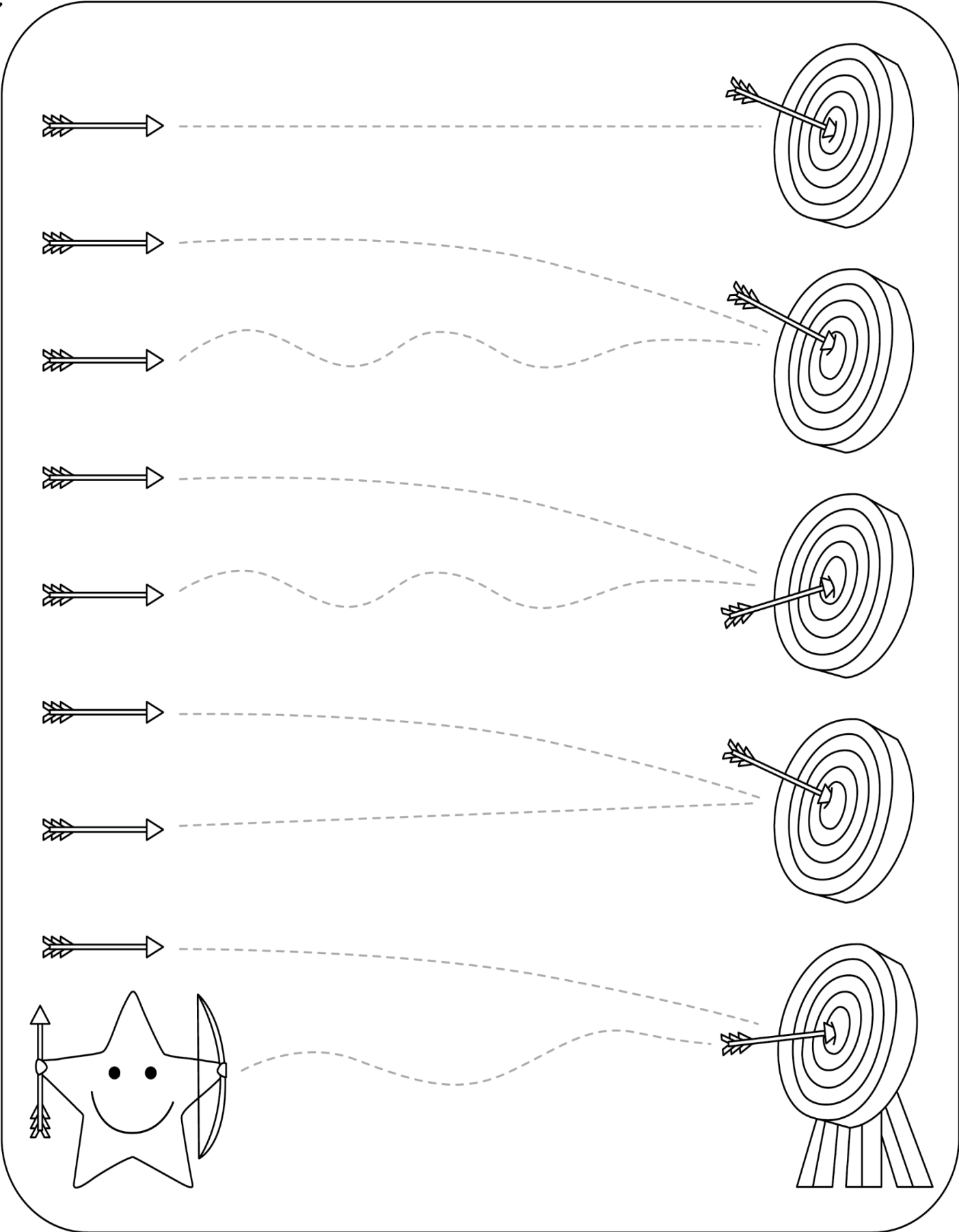
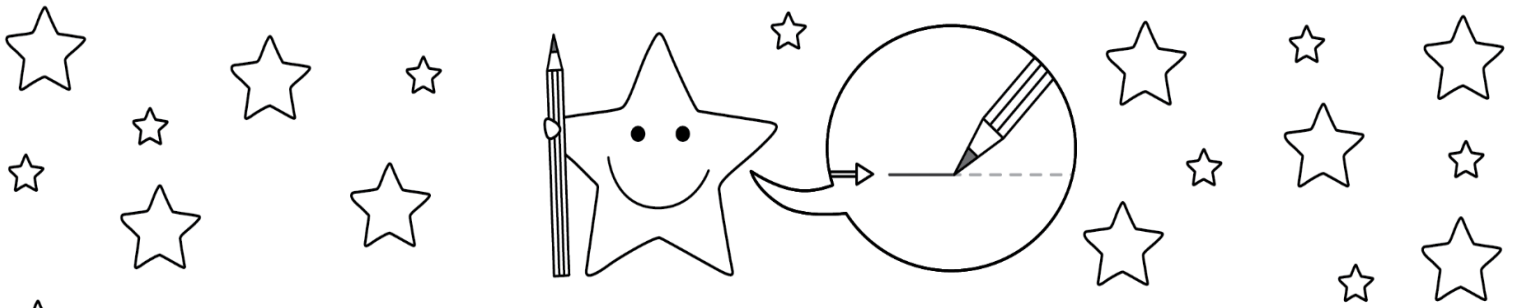
A large rounded rectangular area containing six rows of tracing exercises. Each row starts with a dog on the left and a bowl on the right. A dashed wavy line connects them, with various shapes (leaves, grass tufts) scattered along the path. The bottom row features a smiling star holding a leash attached to a dog.

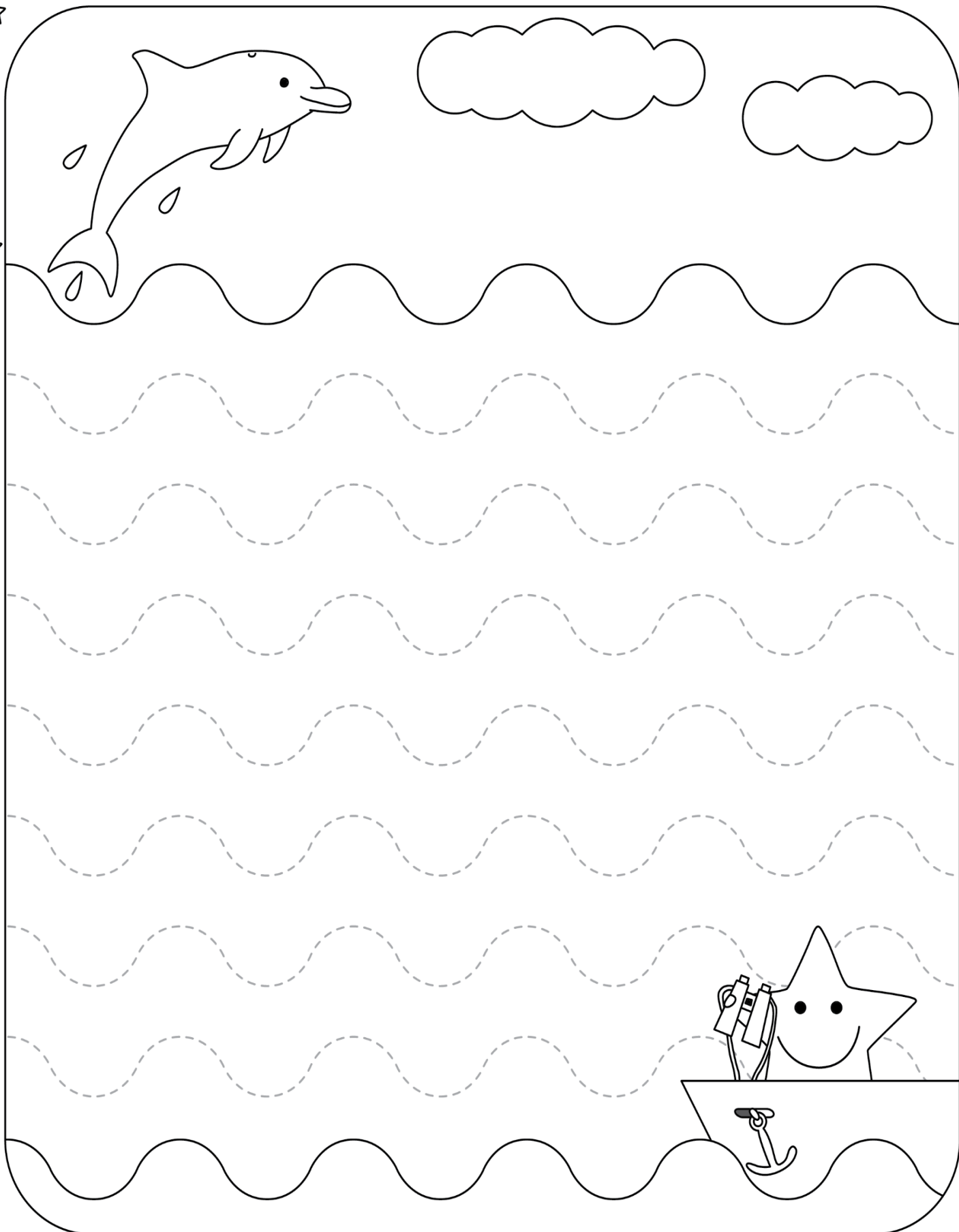
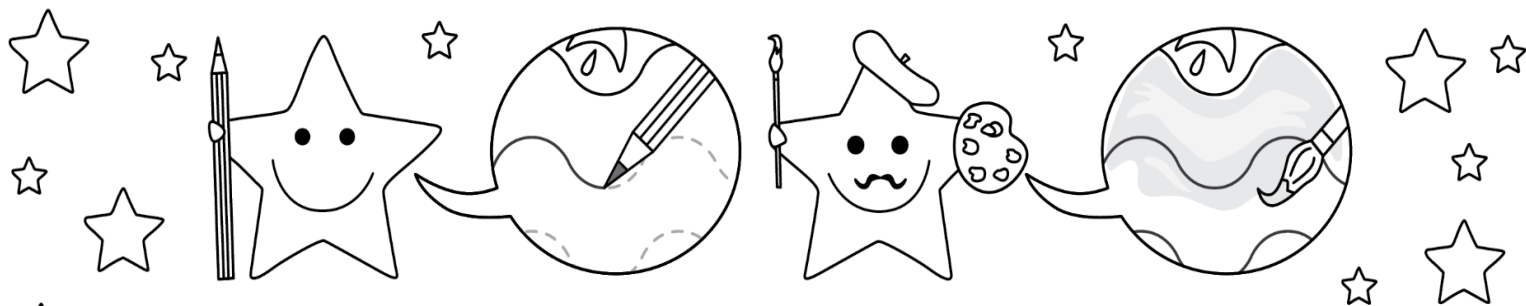


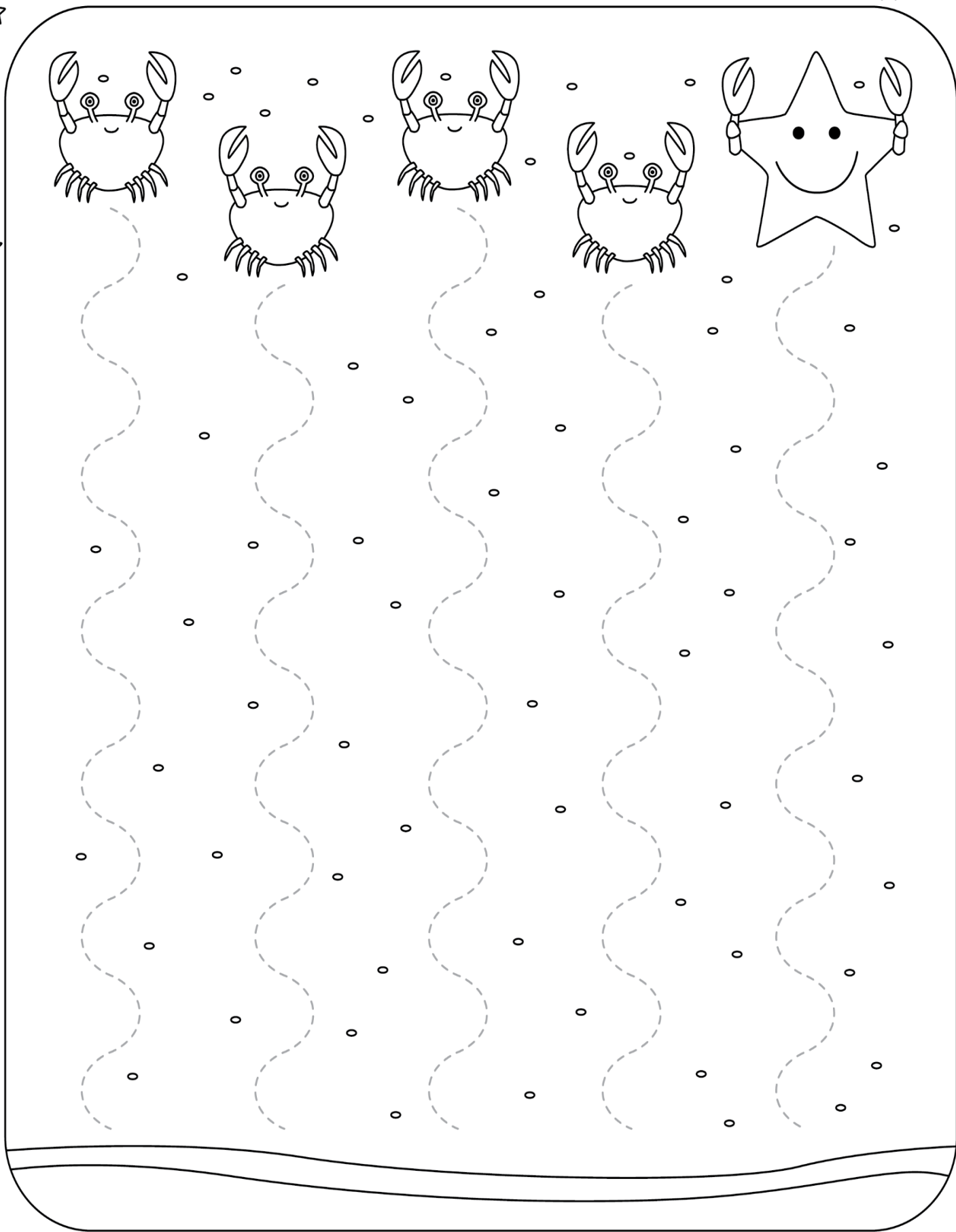
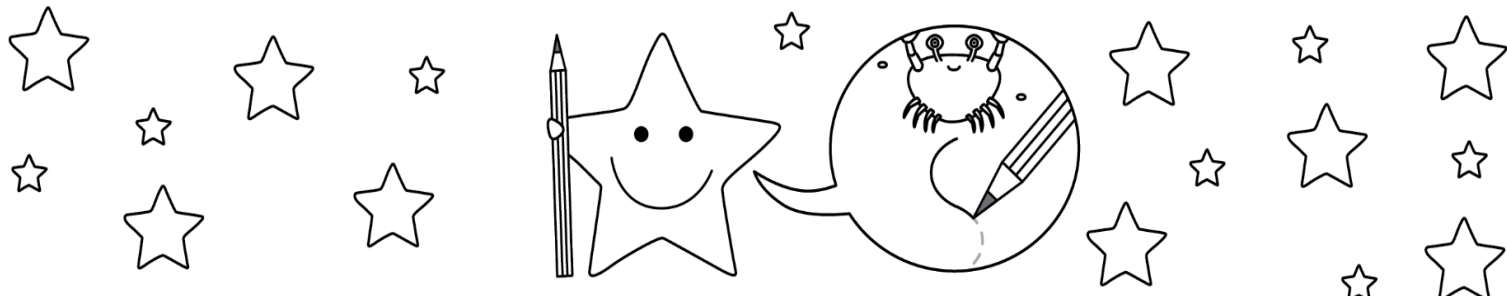




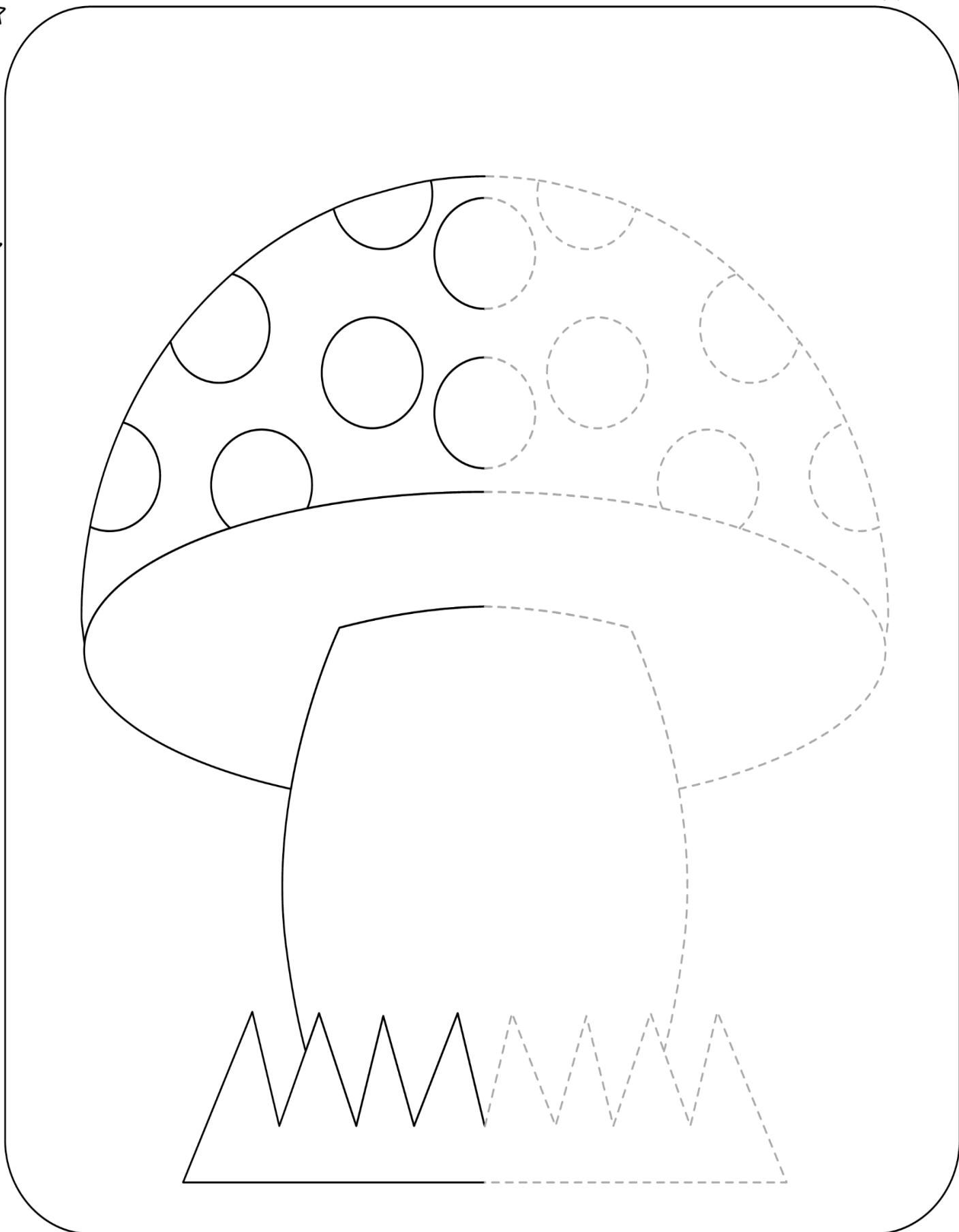
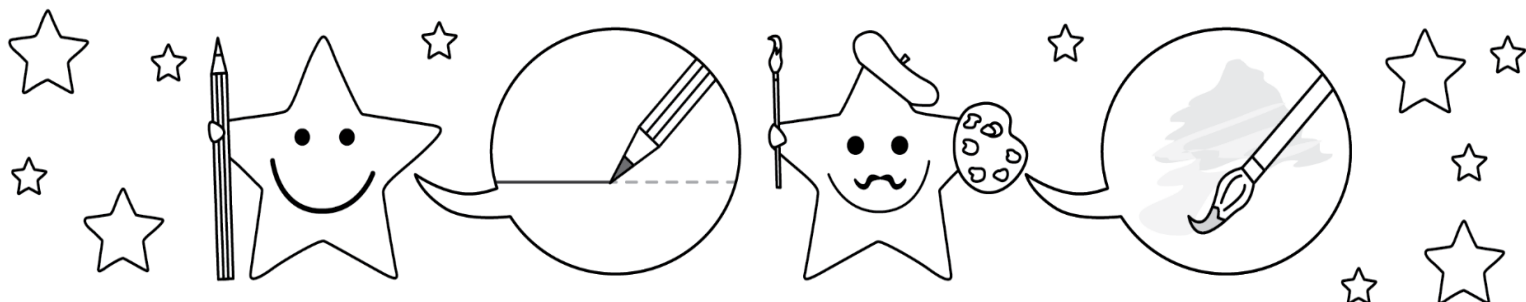
A large rounded rectangular area containing a tracing exercise. The exercise consists of ten rows of dashed wavy lines. Interspersed among these lines are various icons: a flower on a stem, a crown, and a smiling star holding a paintbrush. The icons are placed at different intervals across the rows to provide visual cues for the tracing path.

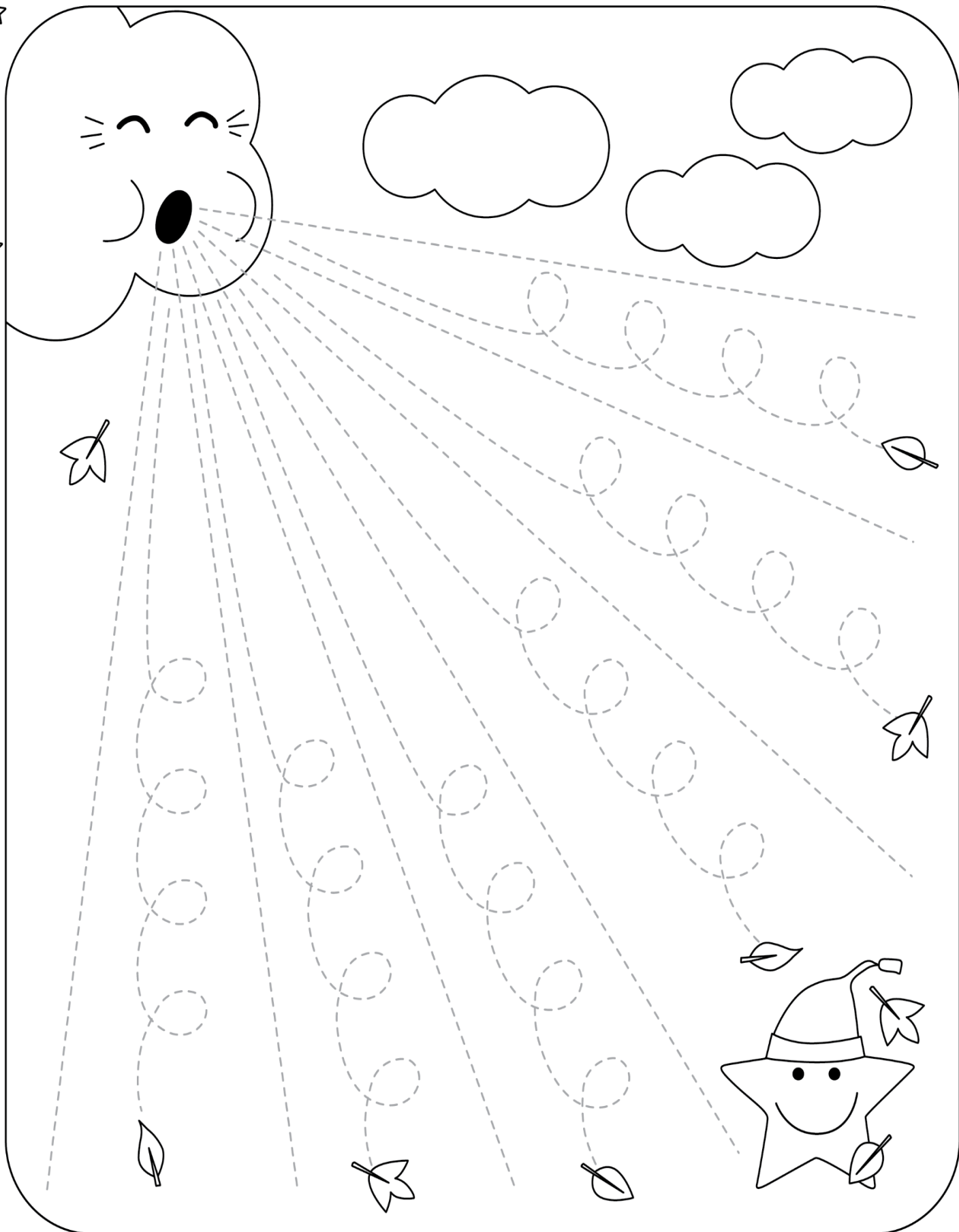
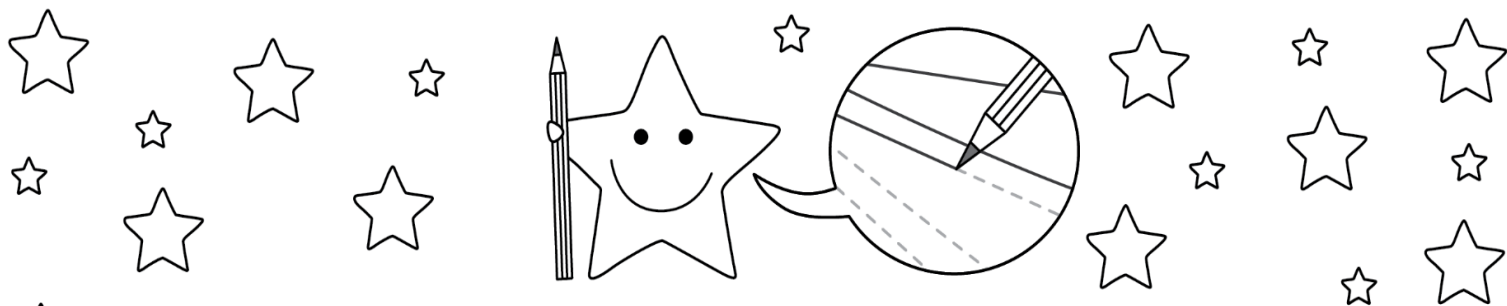


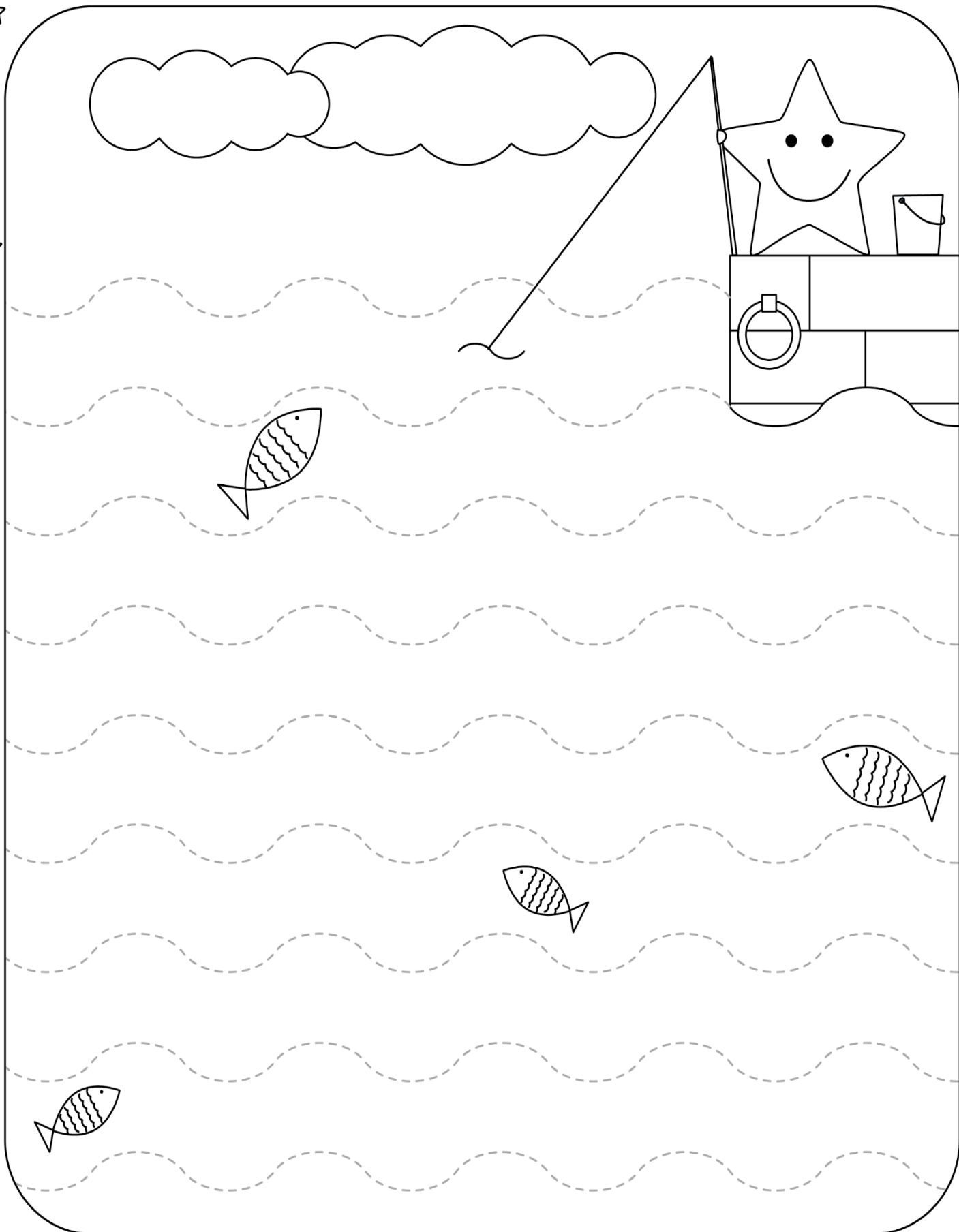
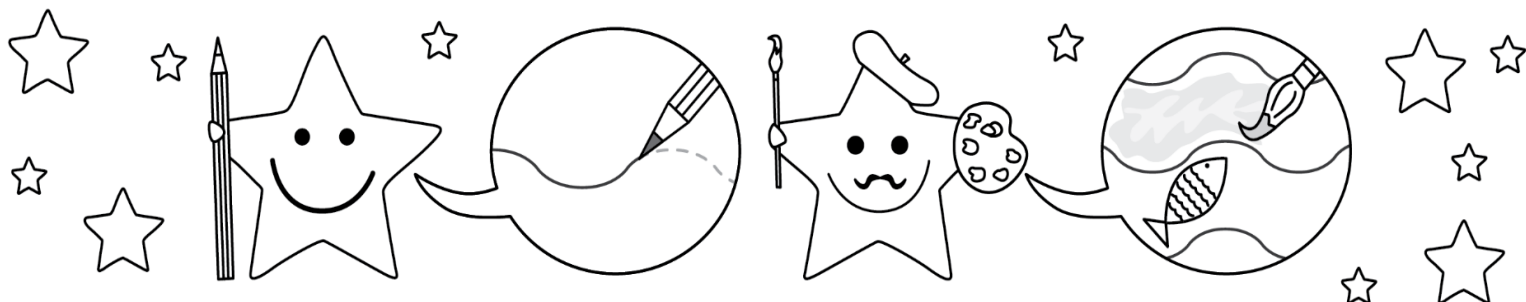


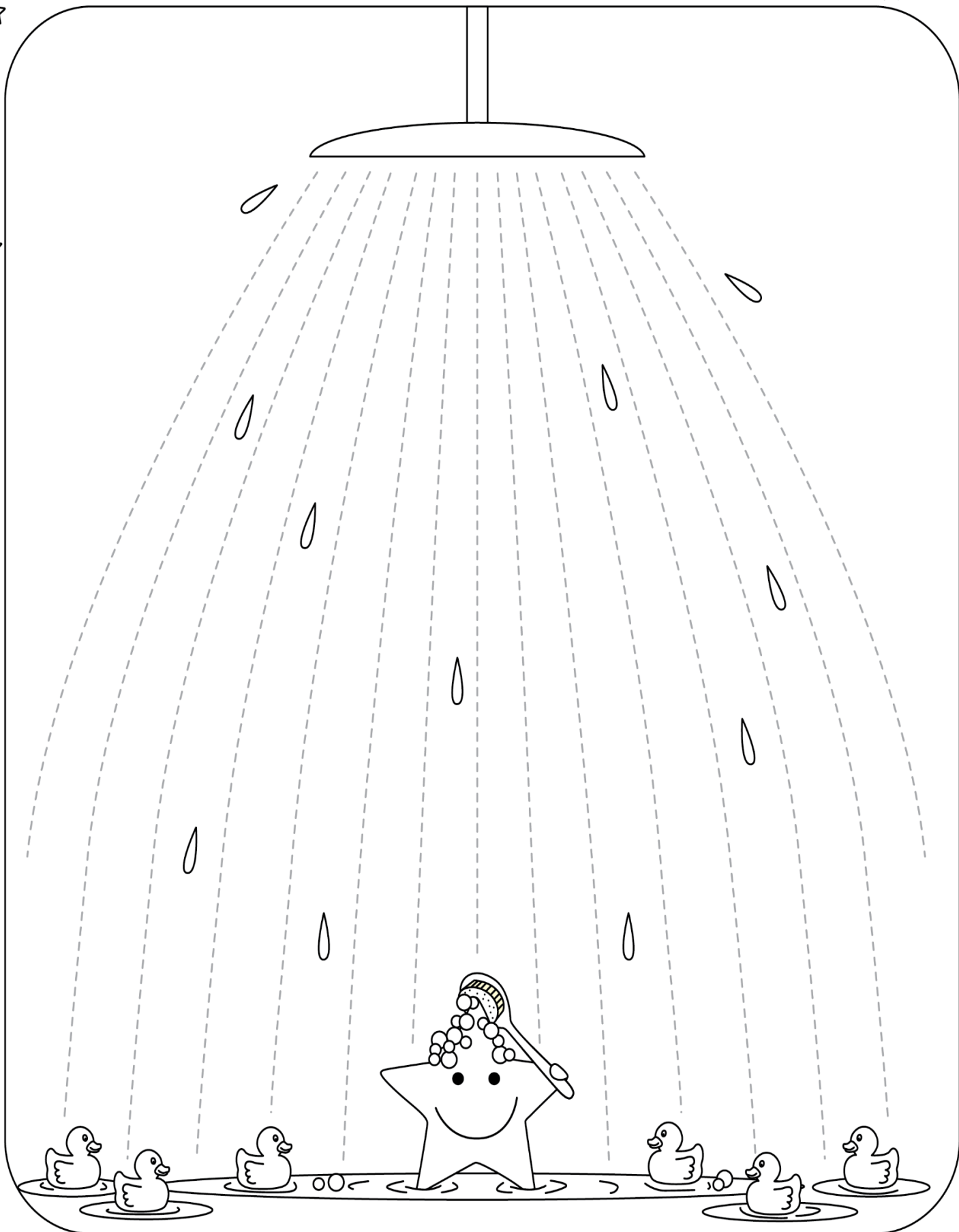
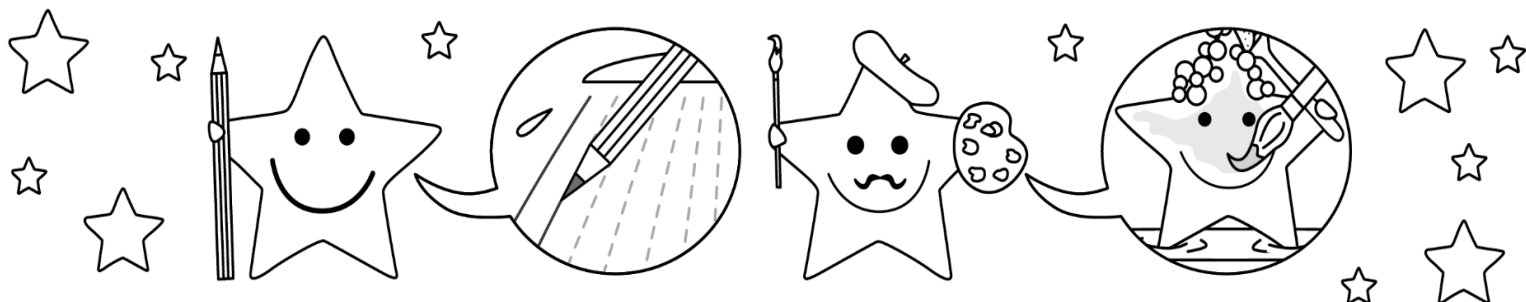


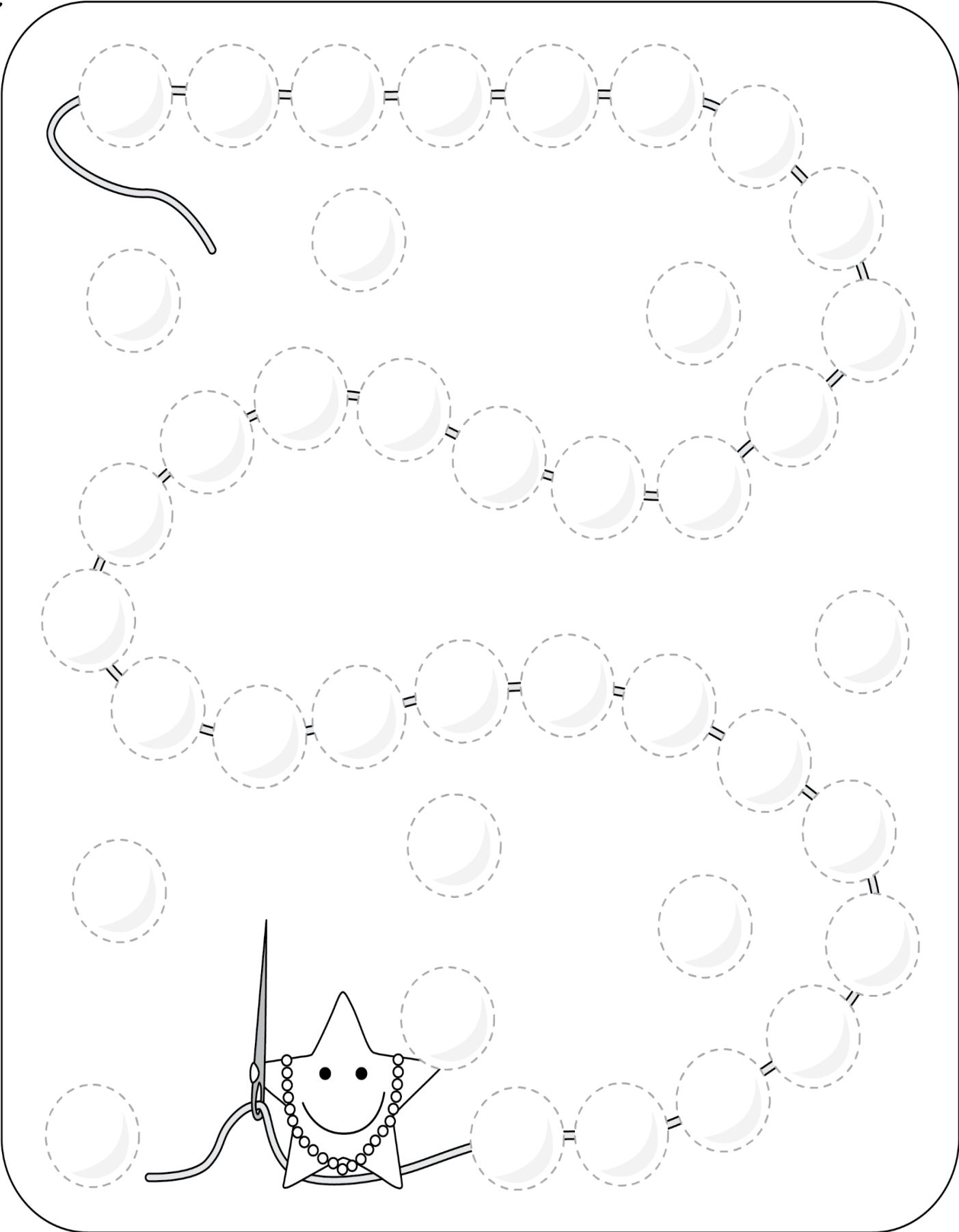
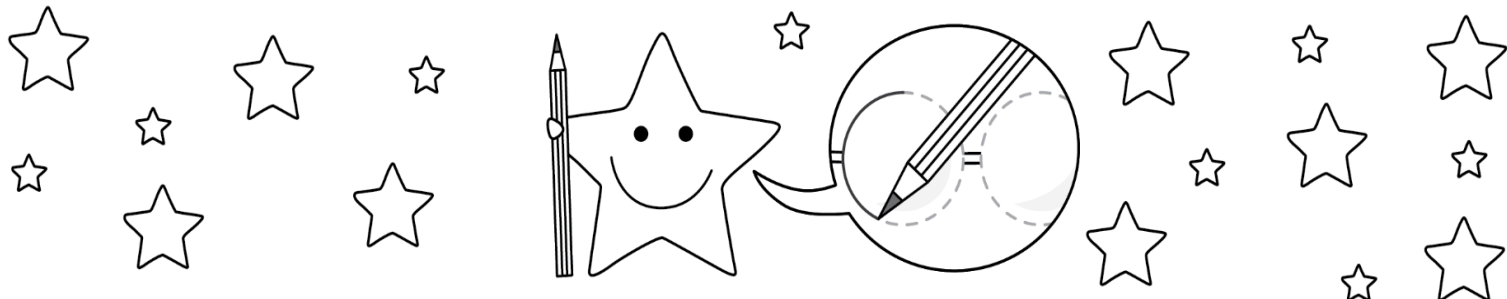


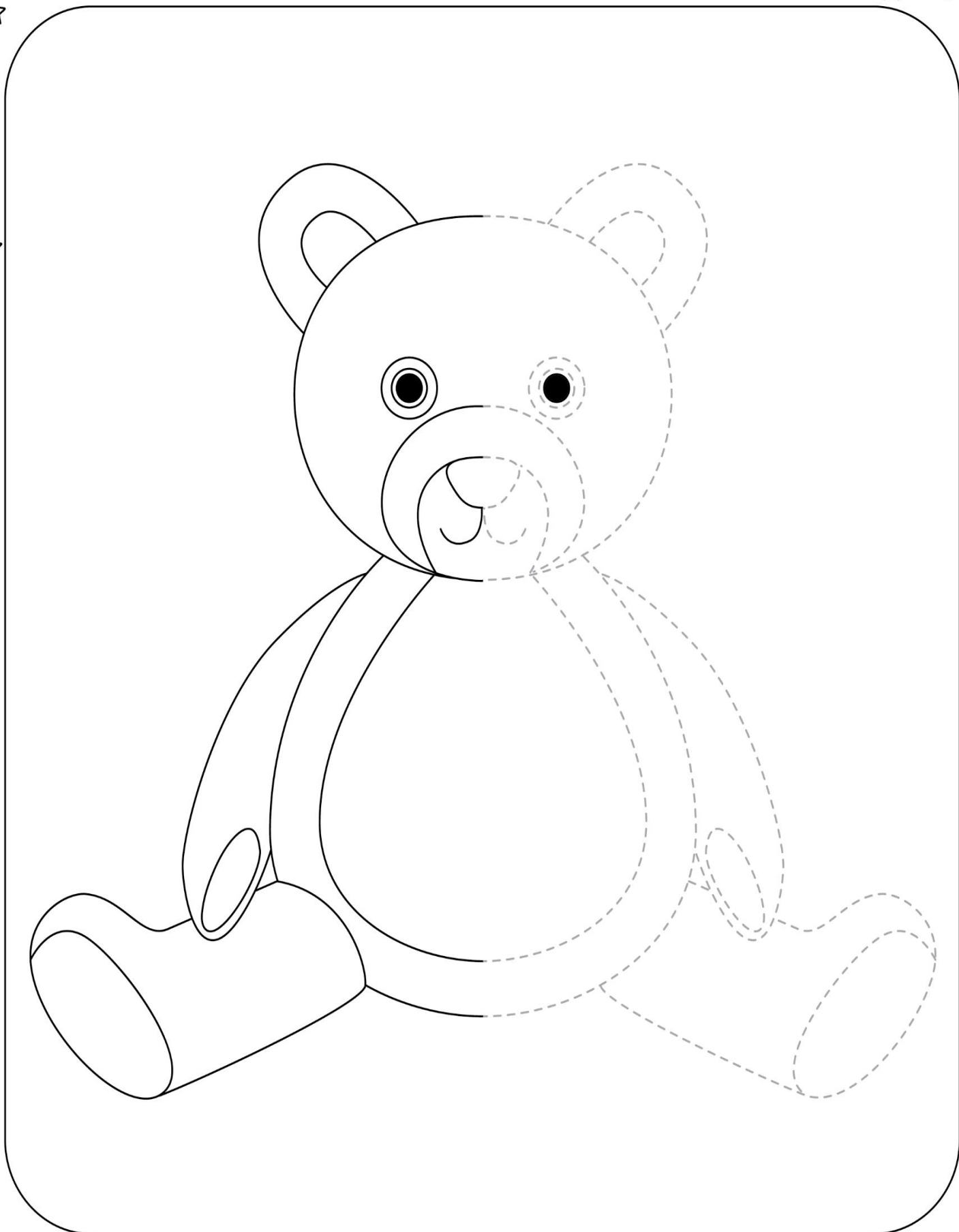
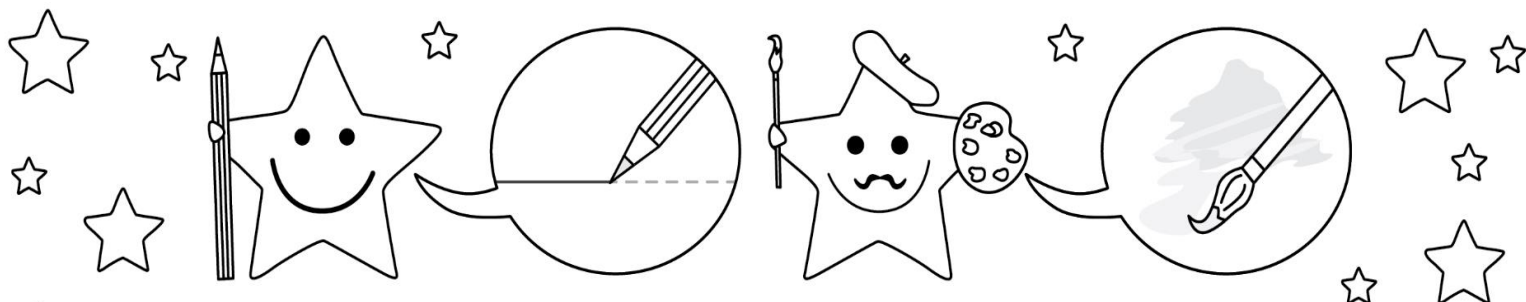


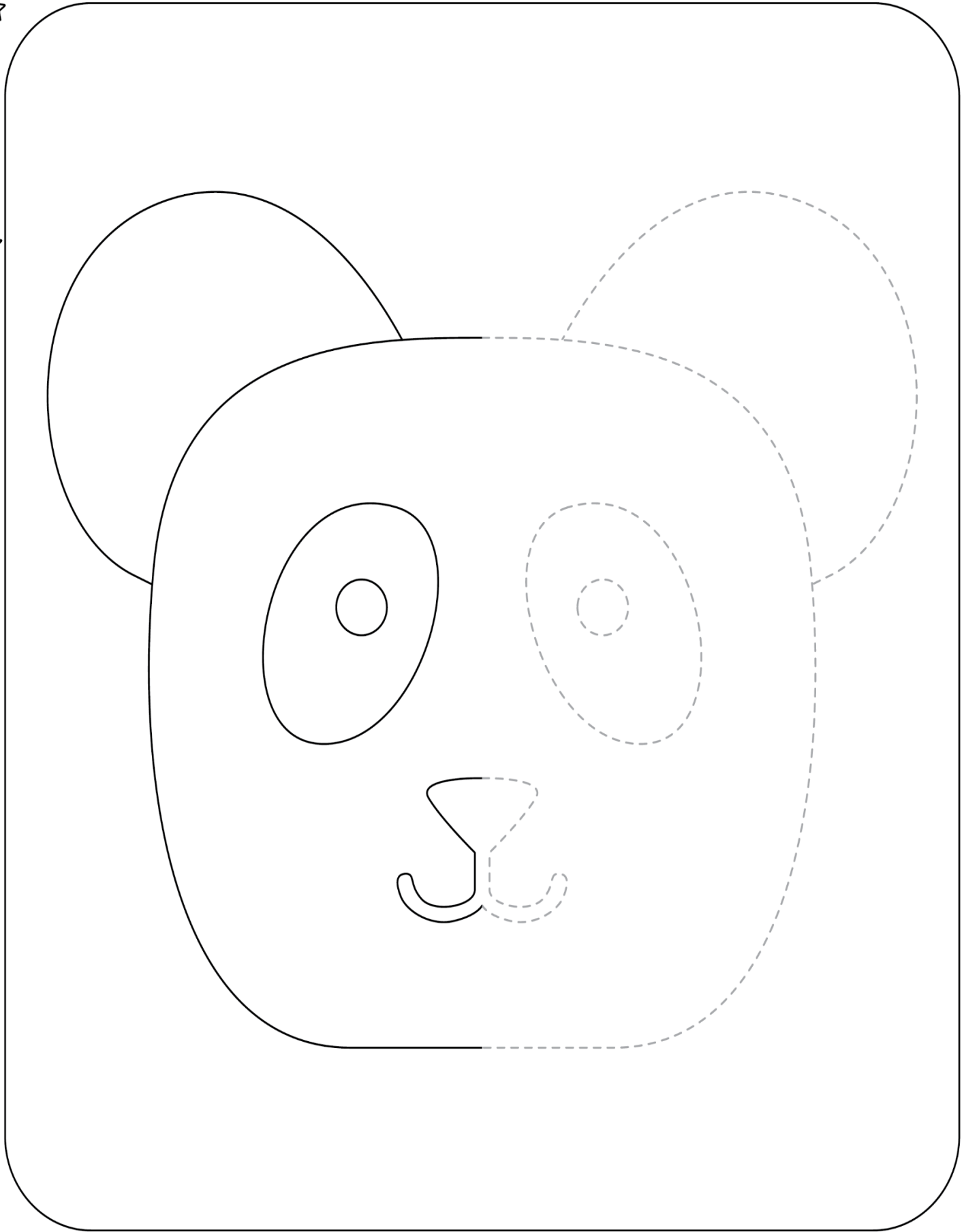
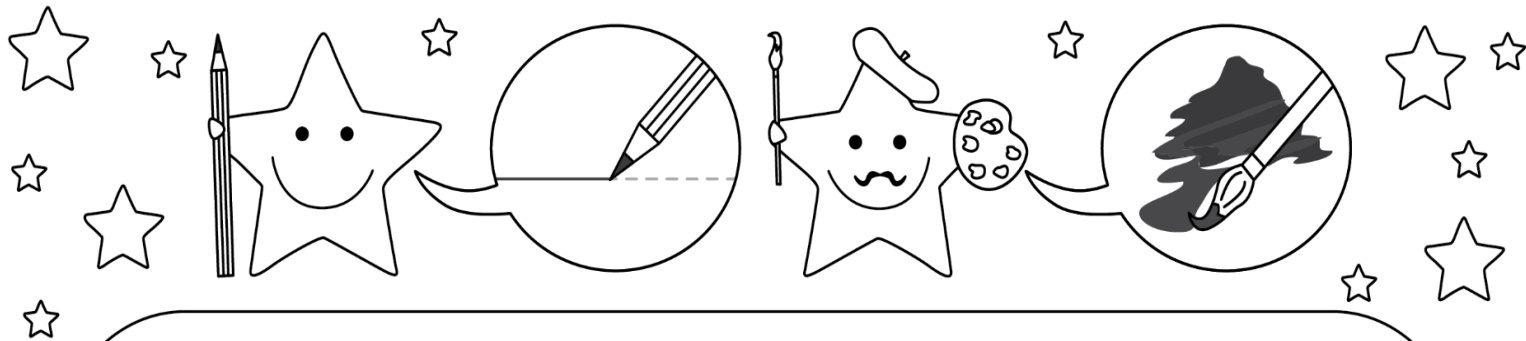


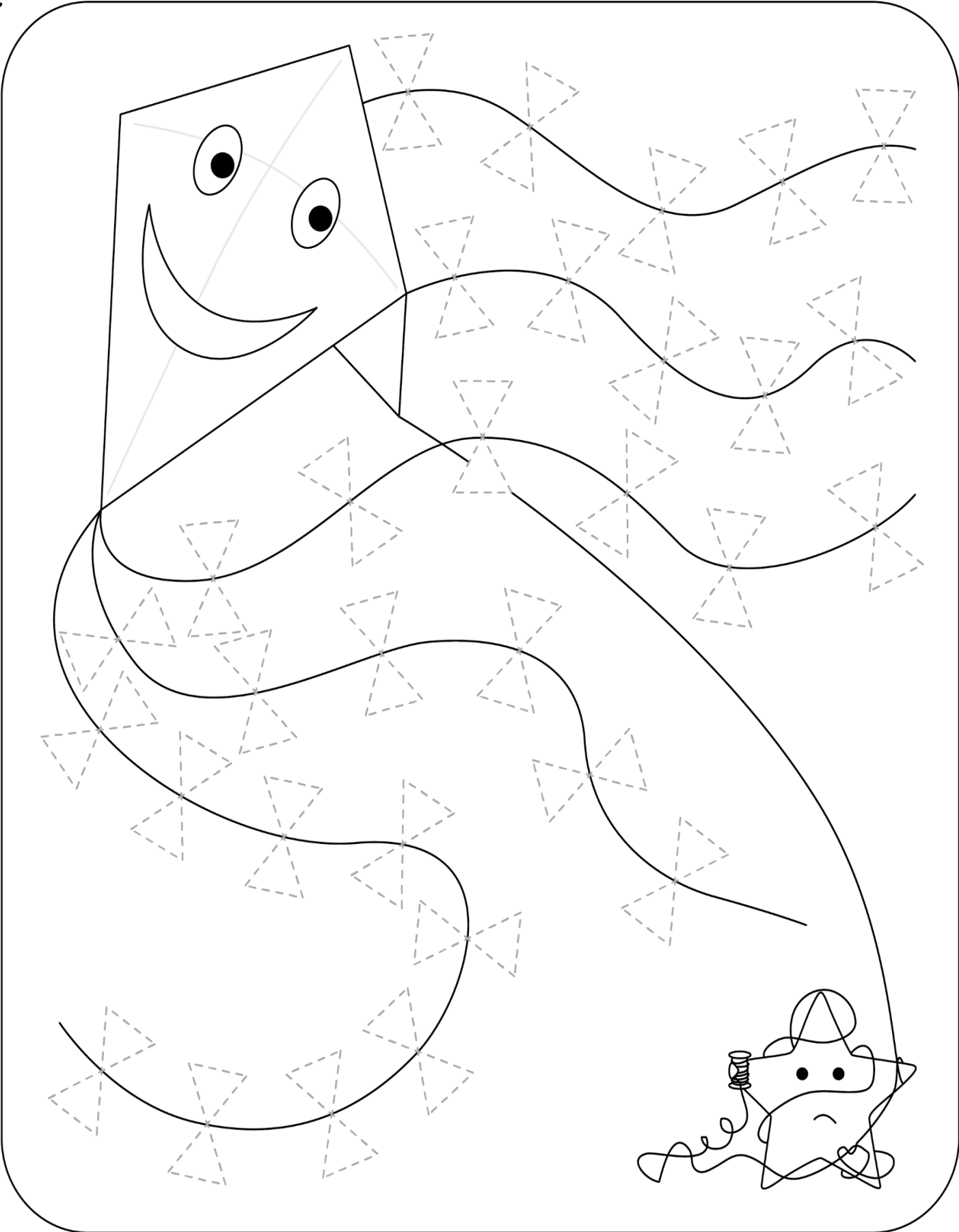
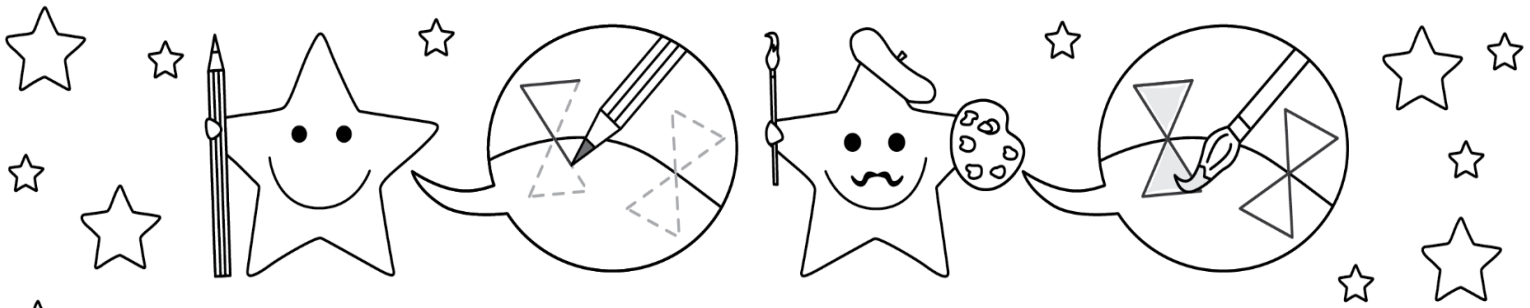




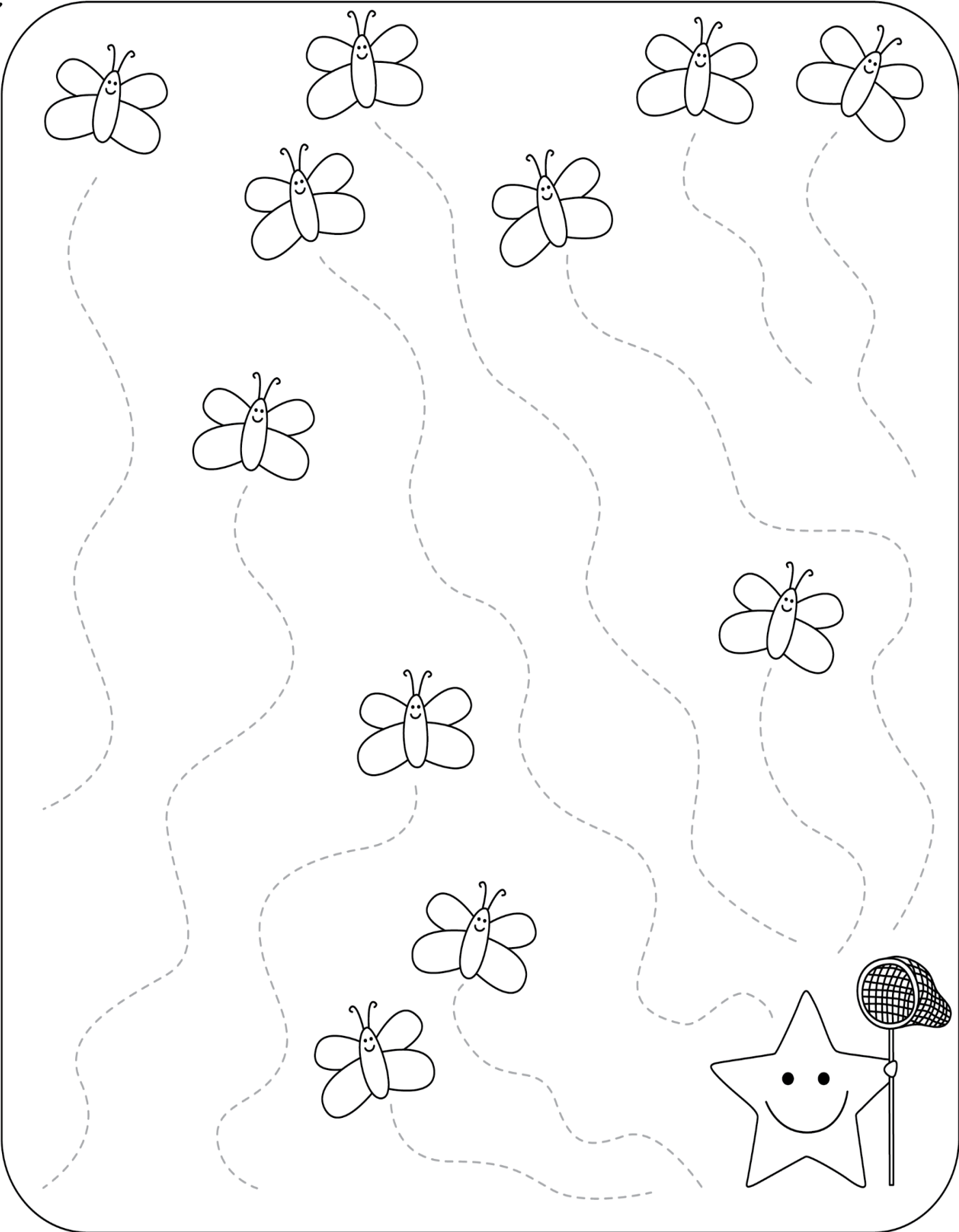
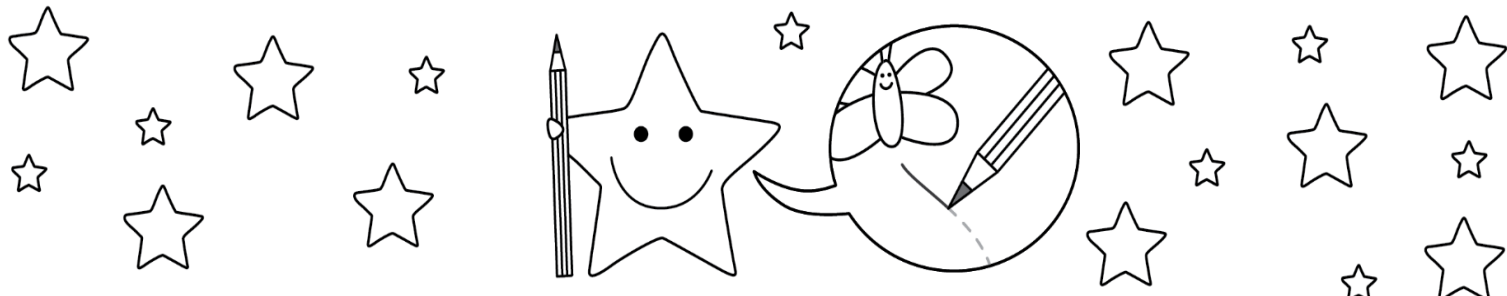


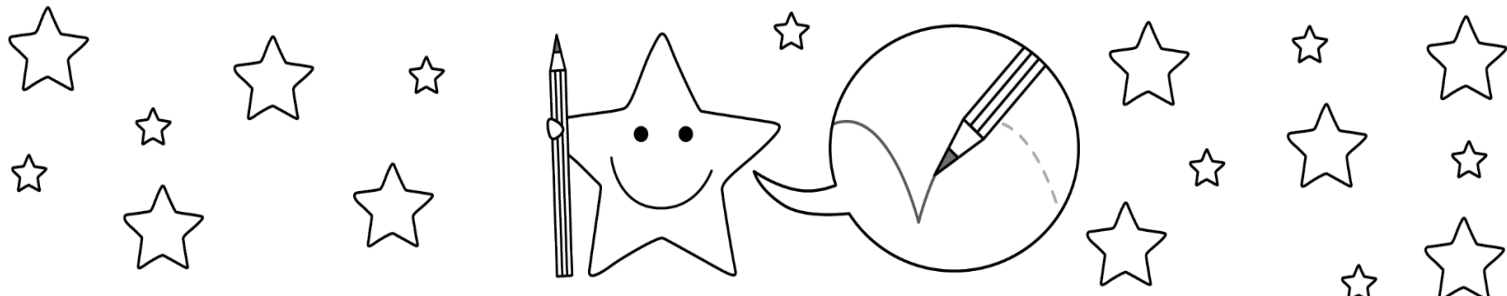




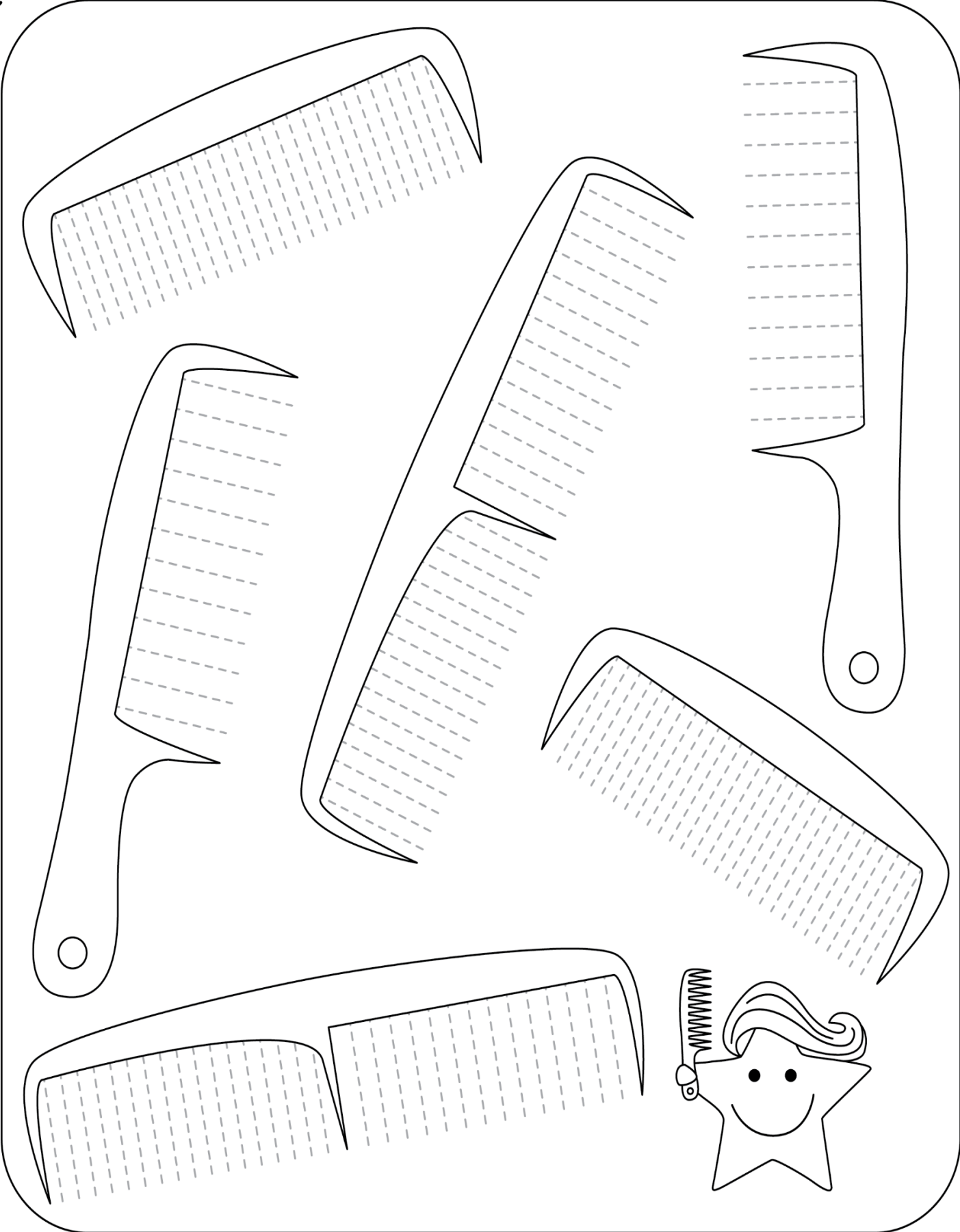
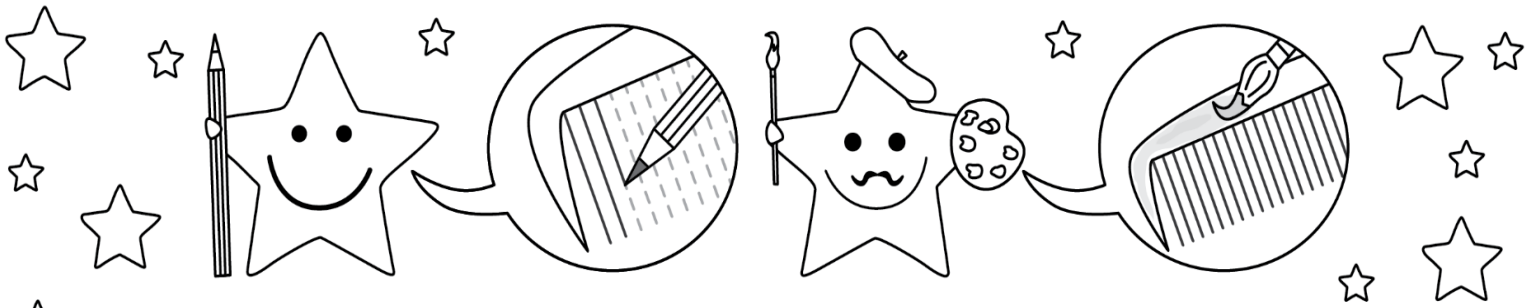


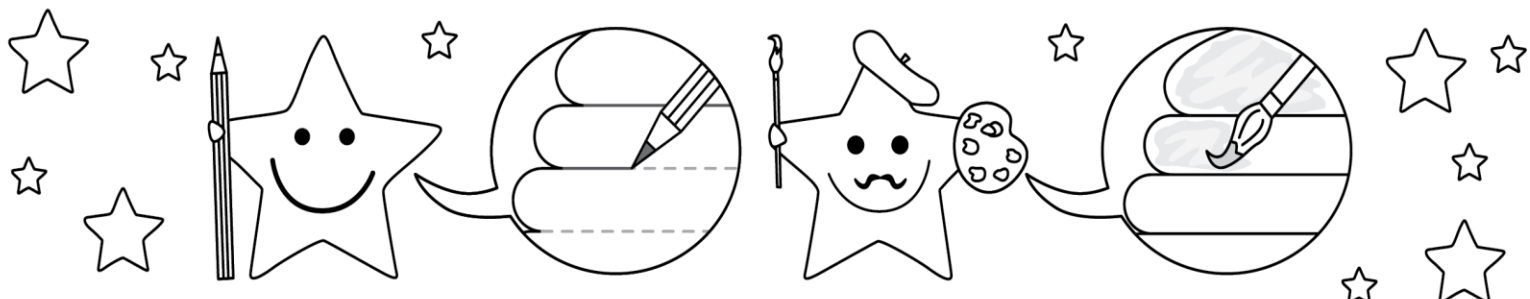






A large rounded rectangular area containing six rows of dashed wavy lines for tracing. Each row is accompanied by a simple line drawing of a frog or a lily pad. The frog drawings are positioned to the right of the tracing lines, and the lily pad drawings are positioned to the left. The sequence of drawings from top to bottom is: frog, lily pad, frog, lily pad, frog, lily pad. At the bottom right of this area, there is a larger, solid line drawing of a smiling star character with two dots for eyes.





A large, rounded rectangular area designed for tracing practice. It features a series of seven horizontal, wavy lines. Each line is a solid top line, a dashed middle line, and a solid bottom line. Scattered throughout this area are several small, striped, bee-like characters with wings and antennae. Some are positioned above the lines, some below, and one is inside a small archway at the bottom. At the bottom right corner of the area, there is a larger character that looks like a star wearing a wide-brimmed hat with a checkered band.

